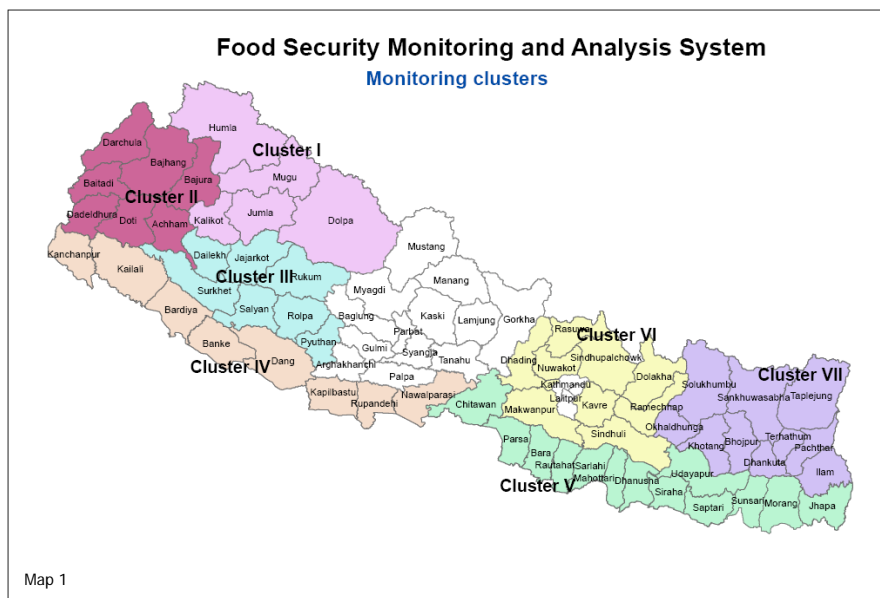




Editorial

In the past 4 years, WFP has implemented the field surveillance project funded by DFID with the aim to providing field based information regarding household food security across 32 districts of Nepal. The surveillance system is currently being strengthened to include macro, micro and sectoral level analysis; baseline surveys and assessments; and the monitoring of food security, crop, nutrition and market conditions. The information will be disseminated in the form of food security bulletins; crop situation, nutrition and market updates; maps and other early warning information products to provide counterparts and the donor community access to up-to-date, reactive and transparent evidence-based field information.

For food security monitoring purposes, Nepal has been divided into seven monitoring clusters as presented in Map 1. Apart from the Terai, the Western Development Region is currently not covered by the Food Security Monitoring and Analysis System. In addition, no surveillance activities are currently undertaken in cluster VII – the hills and mountains of the Eastern Development Region. This cluster however, has been identified as a very



deprived part of the country both in terms of poverty and nutrition (see the CBS/WFP/WB poverty and malnutrition maps). Plans are underway to include this region as part of the WFP regular surveillance system. The clusters will form the basis for the collection of household food security and nutrition data, which will be reported in the next food security bulletin.

This issue provides a broad overview on the current food security situation in the country. Section 1, presents the food security phase classification map and identifies the current hunger hotspots in the country.

A brief overview on the summer crop situation is provided in Section 2. More details regarding the status of the summer crops will be provided in issue 3 of the WFP Crop Situation Update.

The effects of local disasters on the food security status are provided in Section 3. Section 4 presents an overview of the broad migration patterns. A brief overview of the development of the rice price (the main summer crop) in selected districts is provided in the last Section.

Food Security Hot Spots

FOOD SECURITY PHASE MAP

The food security phase classification map is presented on page 3 and 4. It is based on the latest information collected during September by WFP field monitors in 34 districts covered under the Food Security Monitoring and Analysis System. Classification of the food security status is based upon a set of reference characteristics. A description of these and the alert level definitions are provided on the last page of this bulletin. Classifications are

made by WFP field monitors who have been trained to ensure consistency. Verification is done through consultation with local and international NGOs and triangulation with other data sources.

HUNGER HOTSPOTS

The continuous drought situation combined with the recent floods and landslides during monsoon, have resulted in a food security situation in certain areas reaching warning levels of deteriorating food insecurity. In several

areas, such as southwest Dolpa and in the southern parts of Siraha and Saptari a situation of an acute food crisis was reported. The total number of people estimated at risk in areas classified as having a deteriorating (phase 3) or acute (phase 4) food security situation is almost 900,000. The breakdown by district is presented in Table 1.

I. THE KARNALI

Traditionally, the Karnali region is a chronic food insecure area of the country. Fortunately, the harvesting of



Number of people at risk

District	Warning of deteriorating food insecurity	Acute food and livelihood crisis	Total
	Phase 3	Phase 4	
I - The Karnali			
Humla	15,000	NA	15,000
Kalikot	7,840	NA	7,840
Mugu	855	245	1,100
Jumla	2,700	4,000	6,700
Dolpa	5,666	11,102	16,768
Sub-Total	32,061	15,347	47,408
II - Far Western Hills and Mountains			
Darchula	1,200	NA	1,200
Bajhang	15,000	NA	15,000
Bajura	3,000	NA	3,000
Baitadi	8,425	NA	8,425
Sub-Total	27,625		27,625
III - Rapti Bheri Hills			
Dailekh	29,357	NA	29,357
Pyuthan	20,000	NA	20,000
Rukum	12,000	NA	12,000
Rolpa	10,000	NA	10,000
Sub-Total	71,357		71,357
IV - The Terai			
Banke	9618	9,222	18840
Bardia	19,967	NA	19,967
Saptari	55,450	282,985	338,435
Siraha	165,218	183,724	348,942
Udayapur	10,000	NA	10,000
Parsa	3,000	NA	3,000
Sub-Total	263,253	475,931	739,184
V - Central and Eastern Hills and Mountains			
Nuwakot	7,500	NA	7,500
Kavre	2,800	NA	2,800
Sub-Total	10,300		10,300
Grand Total	404,596	491,278	895,874

Table 1

primary and secondary crops has started which may bring relief to many poor households in the coming months. In addition, the distribution of WFP's emergency ration of 80 kg of rice and 14 kg of nutrimix per household to beneficiaries in the worst drought-affected areas has helped to alleviate the overall situation. In the southern part of Humla, the failure of the fourth consecutive crop has led to severe hardship among the local population. Unsustainable coping strategies such as extensive borrowing and selling of utensils and animals are frequently practiced. A similar situation can be observed in the western part of Jumla (Kalika, Kudari, Lihi, Ghode Mahadev and Malika) where 70-80% of the summer crop has been lost due to drought. An acute food security situation is going on in the northern part of Rowa VDC in Mugu. Heavy rainfall and landslides resulted in extensive crop losses (60-70%). Households have depleted their food stocks. Signs of malnutrition, especially among women and children are widespread. The drought continues to affect the situation in the south-western part of Dolpa. Both the maize and millet summer crops failed or yields decreased by 40-80%. The scheduled WFP emergency food delivery to these areas is expected to temporarily improve the very acute situation in this part of the Karnali.

II. FAR WESTERN HILLS AND MOUNTAINS

The northeastern belt in Bajura requires close monitoring and early intervention to prevent the situation from further deteriorating. Signs of malnutrition are very worrying which are confirmed by a recent rapid nutrition assessment by UNICEF which found very high levels of malnutrition among children under five with 75% being underweight. In Darchula, a situation of deteriorating food insecurity can be observed in several areas recently affected by landslides. In the northern tip of Baitadi, the food security situation is at the warning level as the maize and paddy crop were both severely affected by excessive and irregular rainfall. The paddy and maize crop in Achham is expected to be good and will provide sufficient food for 4-6 months, however, the VDCs Khaptad and

Devasthan are experiencing a temporary food insecurity situation with 198 people currently being displaced as a result of the 27 August landslide.

III. THE RAPTI BHERI HILLS

Areas in this region can be generally classified as food secure or seasonally food insecure. There are several areas that require close attention, namely VDCs in the north of Dailekh and those in the northwest of Rukum, Rolpa and Pyuthan. Due to drought conditions, the crop yields (maize and paddy) in these areas are reduced by 40-80% below the yield of a normal year.

IV. THE TERAI

In general, districts in the Terai can be classified as food secure. However, due to insufficient and late rainfall, followed by the floods in the last week of August affecting Banke and Bardiya, the paddy and maize production is expected to decrease between 40-80% in certain VDCs (see Crop Situation Update – issue 3). Loss of assets due to flooding on top of crop losses has affected the food security situation in the southern parts of Banke and Bardiya.

A serious situation is developing in Siraha and Saptari in the Eastern Terai due to the paddy crop failure (see Crop Situation Update – Issue 3). In Siraha, 36 VDCs are in the warning phase and in 38 VDCs the food security situation is reported to be critical. In Saptari, 8 VDCs are experiencing a deteriorating food insecurity situation while in 50 VDCs an acute food and livelihood crisis was reported as ongoing. Migration has increased significantly (see section on migration), and people are engaged in damaging coping behaviour such as extensive borrowing, sale of land and livestock.

V. CENTRAL AND EASTERN HILLS AND MOUNTAINS

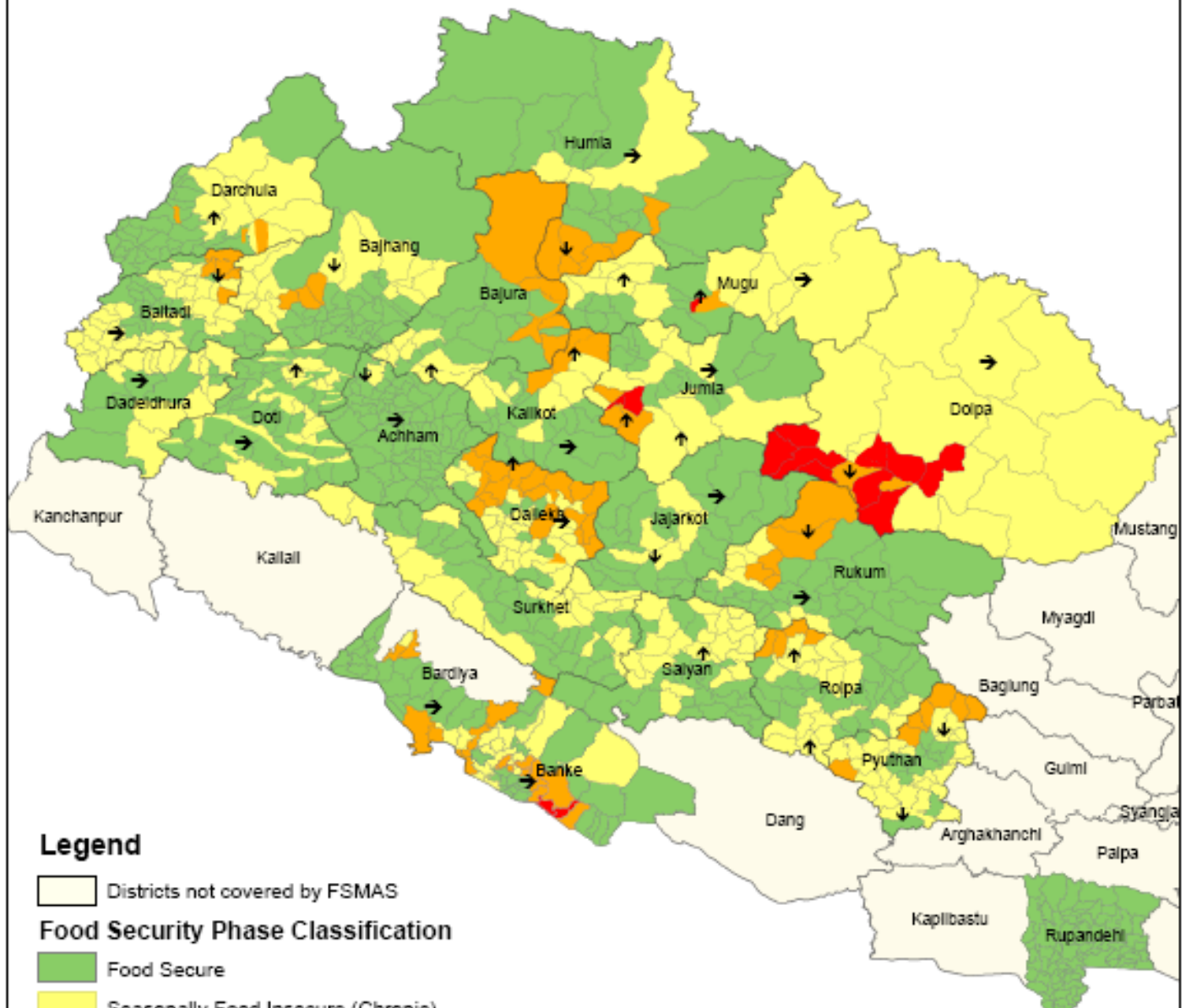
The drought has also affected the upper part of Udayapur with a consequent deterioration in the food security status. Other districts covered by the Food Security Monitoring and Analysis System are classified as being food insecure or chronic food insecure.



Map 2

Food Security Phase Classification Map

Period July - September 2006
West Nepal



Legend

Districts not covered by FSMAS

Food Security Phase Classification

- Food Secure
- Seasonally Food Insecure (Chronic)
- Warning of Deteriorating Food Insecurity
- Acute Food and Livelihoods Crisis

Outlook

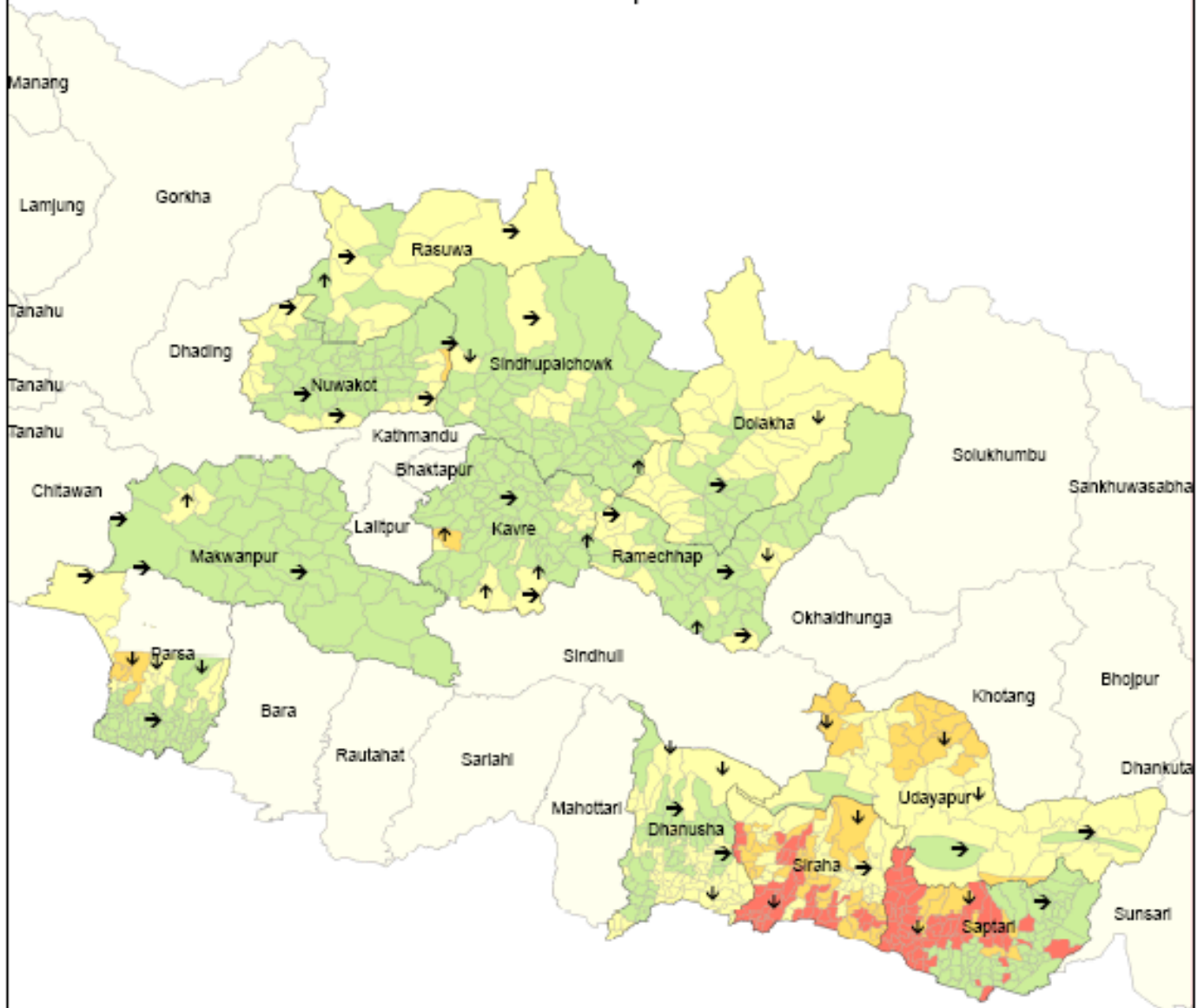
- Likely that the food security situation will improve in the next season
- Likely that the food security situation will remain similar in the next season
- Likely that the food security situation will deteriorate in the next season



Map 3

Food Security Phase Classification Map

Period July - September 2006
East Nepal



Legend

Districts not covered by FSMAS

Food Security Phase Classification

Food Secure

Seasonally Food Insecure (Chronic)

Warning of Deteriorating Food Insecurity

Acute Food and Livelihoods Crisis

Outlook

↑ Likely that the food security situation will improve in the next season

→ Likely that the food security situation will remain similar in the next season

↓ Likely that the food security situation will deteriorate in the next season





Summer Crop Situation

CROP ASSESSMENT

The drought situation continued in many areas of the country during the summer season, affecting the primary summer crops of rice, maize and millet. The Ministry of Agriculture and Co-operatives (MOAC) reported a decline in the national paddy production between 10 – 15 % (see issue 2 of the WFP Crop Situation Update). In several districts in the Mid Western Development Region, the maize crop harvest is expected to decrease between 20-50%.

Given this outlook, the MOAC has requested WFP and FAO to participate in a joint crop assessment which is scheduled to start on 29 October 2006. The aim of the assessment is to validate the early crop production estimates and to look into the implications this may have on household food security. Four teams will cover the key areas of concern: (i) Dhanusha, Siraha, Spatari and Udayapur, (ii) Surkhet, Dailekh and Dolpa, (iii) Banke, Bardiya, Dang and Pyuthan, and (iv) Bajura, Achham and Doti. Donors interested in joining the

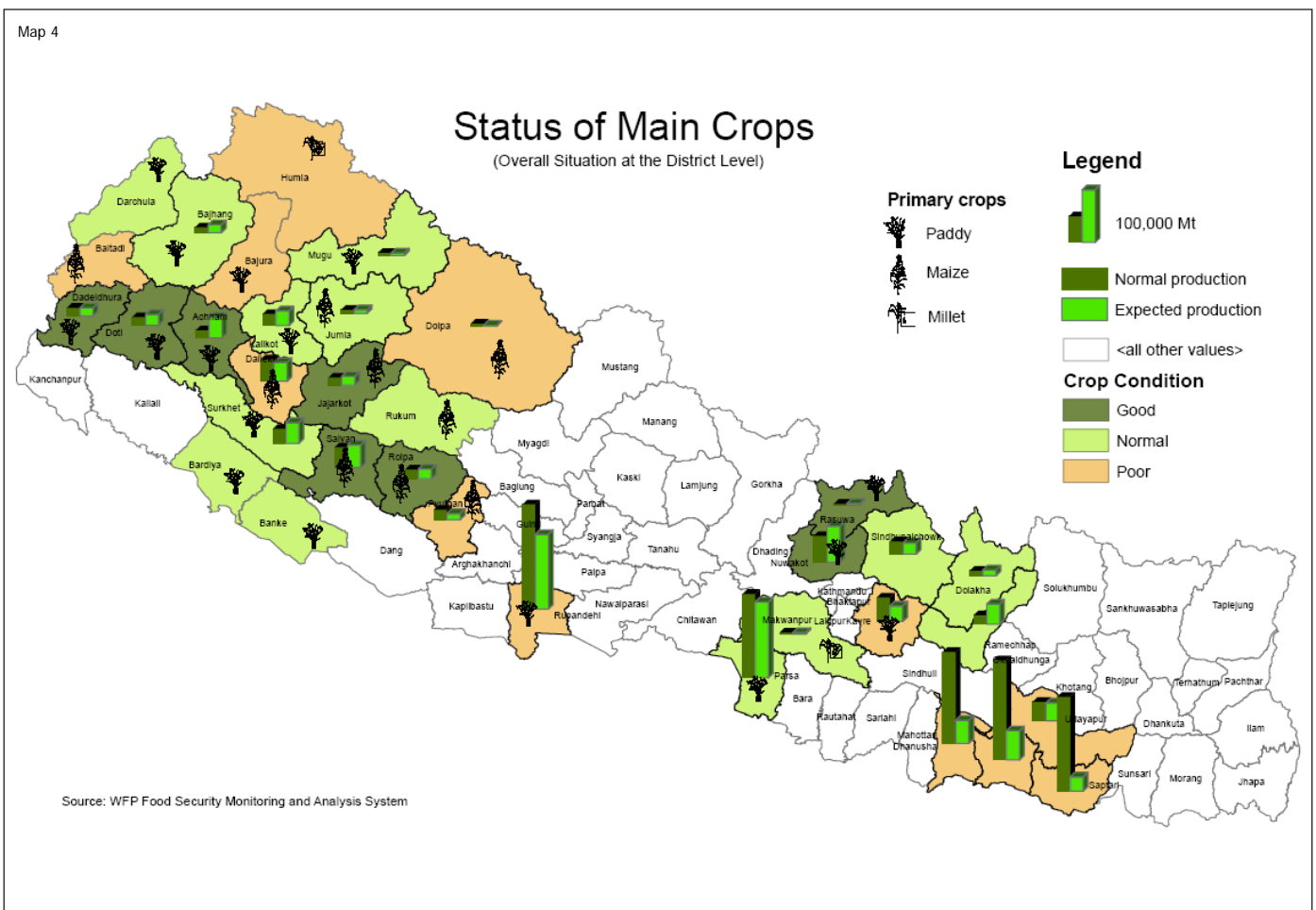
assessment mission are welcome.



An overview of the main crop situation at the district level is provided in Map 4. It shows the crop condition of the main crop production in that district: paddy, maize or millet. Details regarding the status of the main crop and the secondary crop at the sub-district level will be provided in Issue 3 of the WFP Crop Situation Update which will be circulated next week.

Map 4 identifies the districts severely affected by the drought. Where information is available, the normal production of the main crop is compared to the expected production for that district. Districts shaded beige are those with a general poor crop

condition and a sharp reduction in expected yields compared to a normal year.





Natural Disasters

A series of minor and major local disasters were reported in almost every district covered by the WFP Food Security Monitoring and Analysis System (see Map 5). What follows is a summary of some of the major events that contributed to a decline in the local food security situation. The impact of drought is not discussed as this will be covered in the Crop Situation Update to be released next week by WFP.

NATURAL HAZARD AND LOCAL FOOD INSECURITY

Heavy rainfall during 24-29 August triggered the flood that affected Banke and Bardiya. In Banke, the main VDC affected were Phattepur, Holiya, Gangapur and Betahani. In Bardiya the VDCs mainly affected by the flood were Belawa, Sorhawa, Jamuni and Mahamadpur as well as Gulariya municipality. Relief supplies were provided by WFP through the Nepal Red Cross Society to 120,000 flood affected beneficiaries who received a one month's ration of 410 g of rice, 60 g of pulses, 25 g of oil and 7.5 g of salt per person per day. Due to the flooding, the

VDCs most affected are currently in the food security warning phase. In Banke the food security situation for the VDCs Holiya and Gangapur was reported acute. However, pending rehabilitation efforts, it is expected that this will be of temporary duration.

Achham was also affected by the heavy rainfall which caused a landslide in Khaptad and Devasthan VDCs, and flooding along the Ardhala and Budhiganga rivers. Six people died due to the landslide, 112 houses were damaged and 650 MT of food grain was lost.

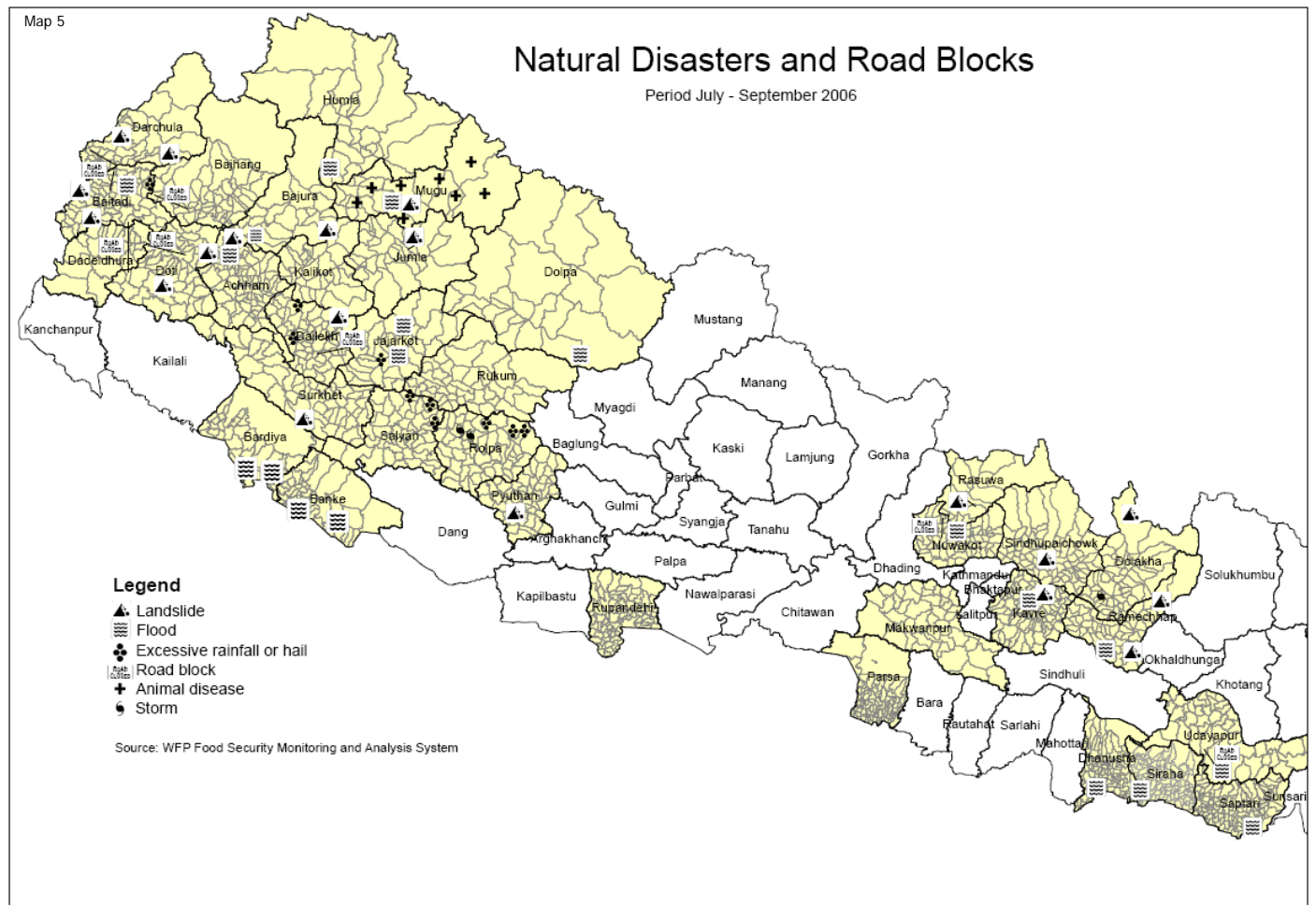
Jajarkot was affected by heavy rainfall and flooding. Floods occurred in Paink, Dhime and Jhapra which washed away 125 hectares of paddy land. Heavy rainfall damaged 30 hectares of maize land. In total about 1,595 people were affected.

Landslides occurred in different VDCs between 10-20 August in Dailekh, damaging agricultural land, houses (15 households were displaced) and blocking key transportation routes.

In Darchula, landslides caused damage to paddy, maize and fruit production. In Katai, about 118 households were directly affected. A similar number of households were affected in Guljar VDC, resulting in a warning of deteriorating food insecurity in these areas.

In Baitadi, excessive rainfall in the northeast affected the maize and paddy production, resulting in a food security warning. A road block due to flooding from 15 June to 24 September caused the price of food items to increase by 25-30% in the Gokuleshwar market.

Heavy rainfall caused flooding and a landslide in Rowa VDC in Mugu district with severe impact on the local crop production (paddy, millet, maize, chinu and kaguno), causing an acute food crisis in this area. In total about 232 households are at risk. Mugu is also experiencing an outbreak of foot-and-mouth disease. So far 150 cattle have died in the district. Households have started selling their cattle, causing the cattle price to drop.





Migration patterns

With the festival season in October, the upcoming harvest period, and a diminishing conflict situation, allowing people to return to their villages, an influx of migrant labourers mainly from India was observed, particularly in the Far and Mid West. In total and estimated 60,000 people returned from India during this monitoring cycle.

The migration pattern is depicted in Map 6, which shows the approximate number of people migrating in and out of the districts covered by the WFP Food Security Monitoring and Analysis System. Districts where migration patterns were reported as normal for this period of the year are shaded green. Those where out-migration was reported higher than normal are shaded red. The size of the pies indicates the number of people that were estimated by WFP field monitors to be on the move.

High levels of out-migration can be observed in areas with high crop losses and high levels of food insecurity, such as in Saptari and Siraha in the Eastern

Terai. About 19,000 people migrated from Saptari to India, Kathmandu or elsewhere as a coping strategy following the failure of the paddy crop. Out-migration from Siraha is estimated at around 16,000 people and from Dhanush about 7,000 people migrated due to the drought.

About 4,000 people had migrated to India and other parts of Nepal from Rukum due to failure of last year's summer and winter crop. As this year's summer crop was normal in most of parts of the district – with exception of the north west – people are slowly returning back to their villages.

With a deteriorating food insecurity problem in the northern parts of Dailekh, migration is on the increase with an estimated total of about 12,375 people leaving the district during the past couple of months.

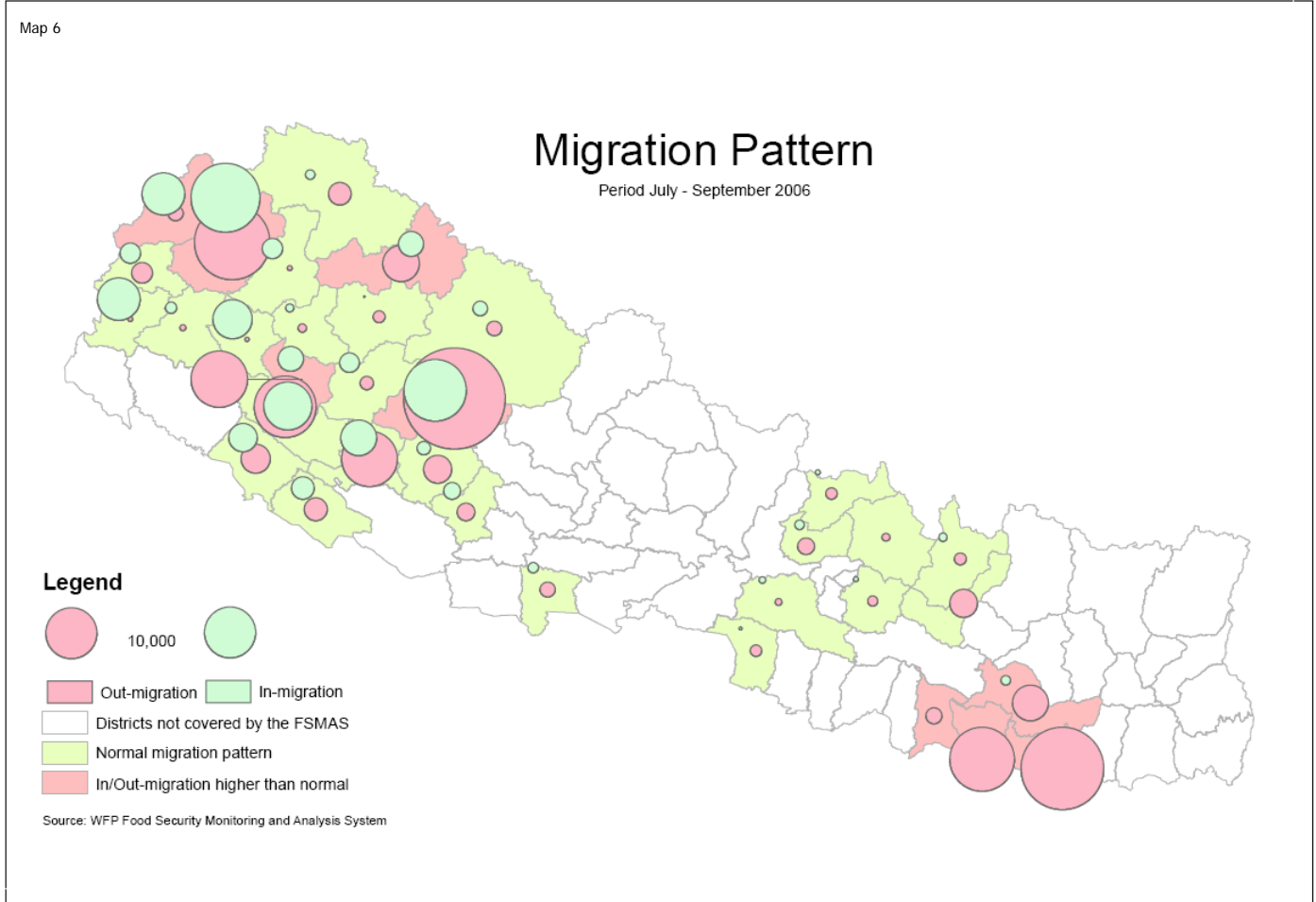
Similarly, the WFP Field Monitor in Bajhang reported a higher than normal out-migration pattern. According to this report approximately 3,000 people left

for India, particularly from the VDCs of Dahabagar, Surma, Daulichaur, Banjh, Bhamchaur, Sainpasela and Lekgaun.

In Darchula a total of 7,000 people returned this period from India compared to about 2,000 last year. The main reason is the improvement in the security situation in the district.

Humla, Mugu and Dolpa observed regular movement to Tibet. From Mugu it was reported that about 3,250 people from the VDCs of Photu, Jim, Kalai, Natharpu, Bhiie and Dhainakot migrated to India due to food shortages.

In Kalikot, a decrease in the number of migrating people was observed as a result of increased employment opportunities in the Karnali Highway Project and WFP PLIC and EMOP activities.

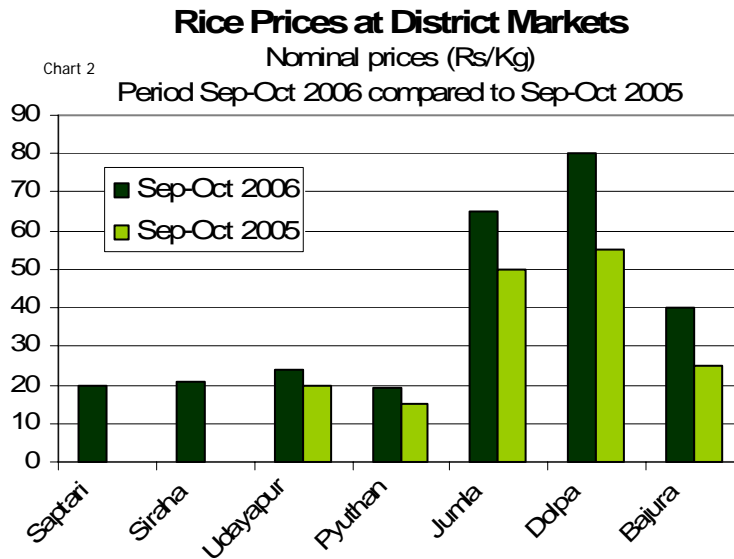
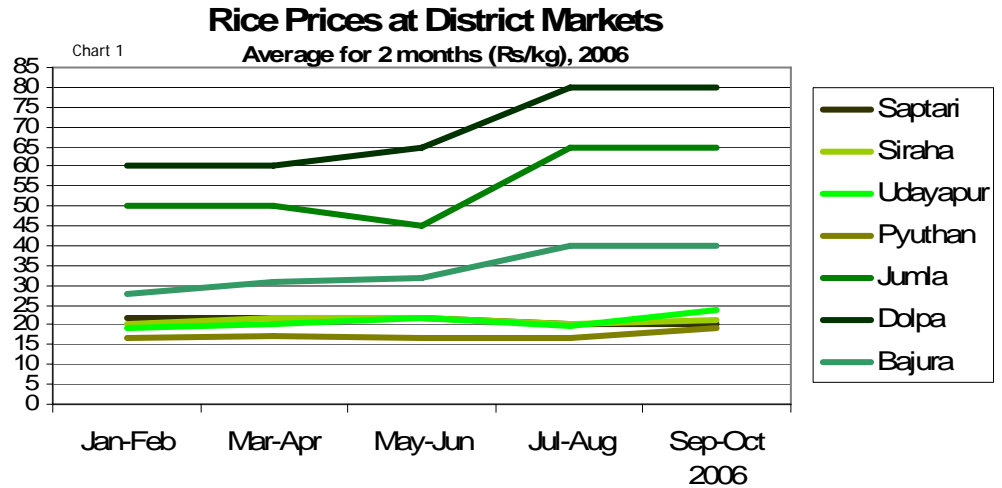




Market update

Prices of basic commodities are collected at the district market as well as in other key markets in the district. The average price of rice at the markets in the district headquarters of Saptari, Siraha, Udayapur, Pyuthan, Jumla, Dolpa and Bajura is presented in Chart 1. The rice price in the mountain districts of the Mid and Far West increased considerably during the period July-August 2006, from Rs 65 to Rs 80 per kg in Dolpa, and from Rs 45 to Rs 65 in Jumla. Comparing the nominal rice price with the rice price during the same period last year shows a substantial increase in these mountain districts, ranging between 30 to 60 percent (see Chart 2).

Despite the failure of the paddy crop in the districts in the Eastern Terai, Siraha and Saptari, the rice price remains stable on the market at around Rs 20 per kg. This indicates that the markets are well integrated and that the shortages are compensated through increased imports from other districts and India.



Food Security Bulletins are produced by WFP Nepal as part of the Food Security Monitoring and Analysis System, supported by DFID and OFDA.

For more information please contact the Food Security Monitoring and Analysis Unit
 United Nations World Food Programme
 Patan Dhoka Road, Lalitpur
 PO Box 107
 Tel 5542607 ext 2420-5



Food Security Phase Classification

Phase classification		Alert Level Definitions and Reference Characteristics	
1.	Food Secure	General Food Availability Food Access Nutrition and Health Hazards Civil Security Coping	<ul style="list-style-type: none"> • There are no indications of global food security problems. Poverty levels are low/moderate. • Crop situation is favourable/normal. • There has been sufficient rainfall. • There are sufficient food commodities in the markets. • Households have sufficient food stocks to last until the next harvest. • Markets are functioning and are accessible. • Prices of main staples are stable. • The employment situation is normal. • No excessive in or out migration patterns. • Incidence of wasting is very low. • No major diarrhea outbreaks / or epidemics. • No natural disasters. • General peaceful situation – no enduring bandhs / roadblocks. • No unsustainable coping strategies employed by households.
2.	Seasonally food insecure (Chronic)	General Food Availability Food Access Nutrition and Health Hazards Civil Security Coping	<ul style="list-style-type: none"> • The area is experiencing seasonal food insecurity during the normal lean periods. Poverty levels are high. • Crop harvests are low to normal. However, current crop is not sufficient to feed the population until next harvest. • Rainfall has been intermittent but acceptable. • The markets are functioning and accessible but are less well stocked. • Households have insufficient food stocks to last until next harvest, but this is generally considered as normal. • Prices of main staples are higher than normal. • There are limited employment opportunities during this time of the year. • Out-migration is increasing. • Incidence of wasting is low. • Indication of diarrhea outbreaks / or epidemics. • Occurrence of natural disaster with resulting crop, stock and asset losses. • General peaceful situation. Bandhs and roadblocks may cause additional hardship. • Indications of intensified HH coping behaviour (asset selling, borrowing, migration etc)
3.	Warning of deteriorating food insecurity	General Food Availability Food Access Nutrition and Health Hazards Civil Security Coping	<ul style="list-style-type: none"> • The food security situation is deteriorating in the area; food shortages are much more than acceptable/normal for the time of the year. Poverty levels are high. • Crop harvests are low. More than 50% of the crop is lost. • Rainfall has been insufficient/late/non-existent for consecutive years. • Markets are non-existent due to no or limited supply. • Households have depleted or very low food stocks. • Prices of main staples are increasing rapidly and are unstable. • There are very limited employment opportunities during this time of the year. • Levels of out-migration are high. • Incidence of wasting is moderate to high. • Evidence of malnutrition in women and children is easily observable. • Indication of severe diarrhea outbreaks / or epidemics. • Occurrence of large impact natural disaster with resulting crop, stock and asset losses. • Limited conflict situation with increasing civil security incidences. • HHs adopt irreversible coping behaviour (productive asset selling -tools, seeds, land-, large amounts of borrowing, etc).
4.	Acute food and livelihood crisis	General Food Availability Food Access Nutrition and Health Hazards Civil Security Coping	<ul style="list-style-type: none"> • There's an acute food crisis in the area. Extreme food shortages occur. Poverty levels are very high. • Crop harvests are very low or have been lost. More than 80-100% of the crop is lost. • Rainfall has been insufficient/late/non-existent for several consecutive years. • Markets are non-existent due to no food supply. • Households have depleted their food stocks. • Prices of main staples are very high and unaffordable for a large portion of the population. • No employment opportunities. • People are out-migrating due to food scarcity. • Incidence of wasting is high. Underweight levels of children are above 75%. • Evidence of malnutrition in women and children is widespread. • Occurrence of severe diarrhea or epidemic outbreaks. • Occurrence of large scale impact natural disaster with resulting crop, stock and asset losses. • Extended conflict situation – no agricultural activities possible. • HH adopt crisis coping strategies (productive asset selling -tools, seeds, land-, large amounts of borrowing, etc).